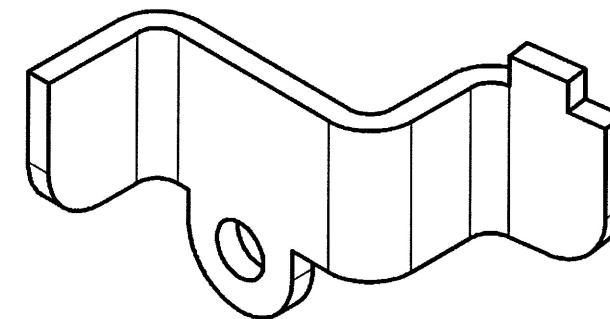


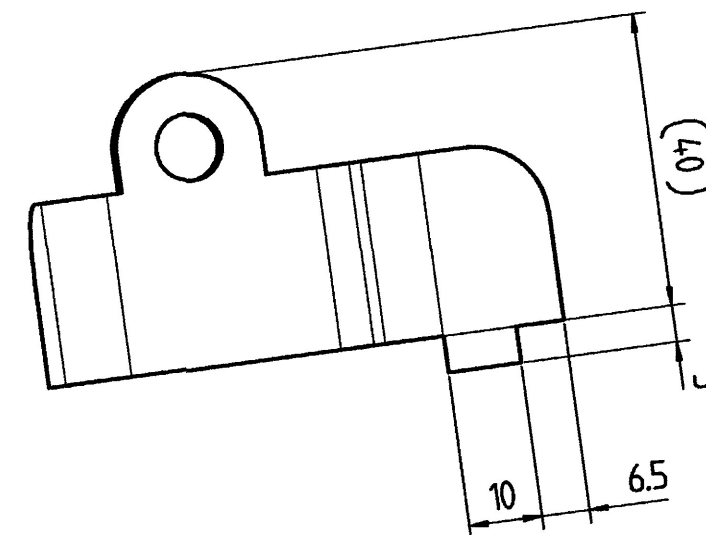
PŘEKLAD

dne: 13 -12- 2019

PROVEDL/A
Beandora' Gra



následující pohled #
Following view F



TLoušťka PLECHO = 4 mm
Poloměry bez rozměrů R = 10
Vpoloměrech: R = 4

NOTE :

- Metal sheet thickness : 4 mm
- Radii without dimension : R = 10
- Inside bend radii R = 4
- Unfolded length (for info) = /

13 -12- 2019

ARCHIV

21/19/00797

+0.5
-0.5

Condition at time of delivery

de-scaled (degree of purity SA 2 1/2 acc. ISO 8501-1)	X
without burrs acc. WN 11310	
Permissible top-end rounding during flame cutting (also positive bead acc. WN 10572)	
oil-free / free of grease	
oiled	
oiling permissible	X

Indicate the required condition at time of delivery with an X.

First angle projection

General tolerance (GT) in mm

Size range	< 30	30 < 120	120 < 400	400 < 1000	> 1000
GT	1	2	3	4	6

GT coarse

L	1	2	3	4
1	1	2	4	6

Lengths (L) and angle (∠) = ±GT

Tolerance Symbols ISO 1101

- roundness = 1/2σ-Tol.
- straightness/flatness = AT
- ⊙ concentricity/run out = AT
- ≡ symmetry = AT
- // parallelism = AT
- ⊕ position = AT

Languages: EN;FR

00	Creation	T126783
Index	alteration	Change no
PPAP-Level 1 / WN 50020	Material: S235JR according to EN10025-2	Weight: in kg 0.1
Inspection dim. ()	Aux.dim. ()	Blank no:
Drawn 12.09.2019 T.Lorenc	Checked 17.09.2019 O.Frechet	Title: stop left transporter
Auth'd 17.09.2019 A.TOUZE	M.check. 01.10.2019 V.DeFrance	Prod. Scale 1:1
Drawing number 11914015009		Sheet: 1 of: 1
Confidential document Refer to protection notice ISO 16016		Repl. 11914015003 Orig.

Tolerance řezání laserem

LASER cutting tolerances

NOTE : min cutting radius without dimensions R = 1 mm unless otherwise specified

	≤ 30	30 < ≤ 120	120 < ≤ 400	400 < ≤ 1000	1000 <
	± 0,5	± 0,8	± 1,0	± 1,5	± 2,0

+0.5
-0.5

Pokud není uvedeno jinak,
min. poloměr řezu bez rozměrů
R = 1mm

Released

3715506/D2D/001/00

a3

11914015009V00END001